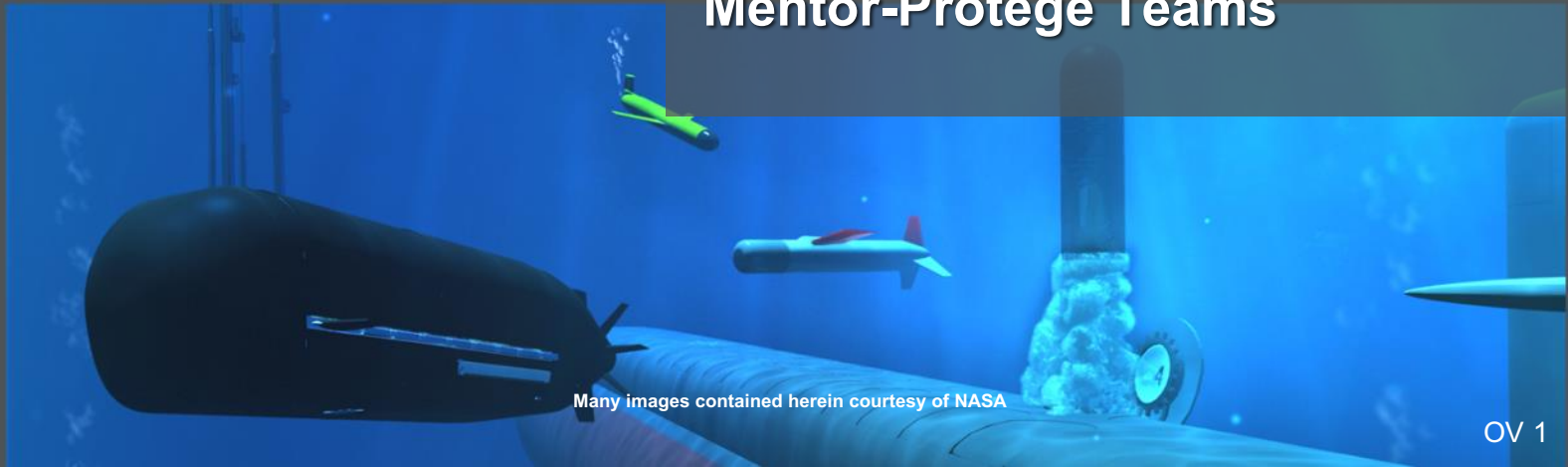


Building a Strong Partnership- Tips and Success Stories from Mentor-Protege Teams



Many images contained herein courtesy of NASA

Parent Company Teledyne Technologies



Everywhere you lookTM

- ▶ Headquartered in Thousand Oaks, California with locations across the globe
- ▶ \$2.3B in 2015 revenues; over 9,100 employees
- ▶ Teledyne Technologies is a leading provider of sophisticated instrumentation, digital imaging products and software, aerospace and defense electronics, and engineered systems. For more information, visit Teledyne Technologies' website at www.teledyne.com.



Teledyne Brown Engineering'

Mission Systems

- Systems Engineering
- Modeling and Simulation
- Test and Evaluation



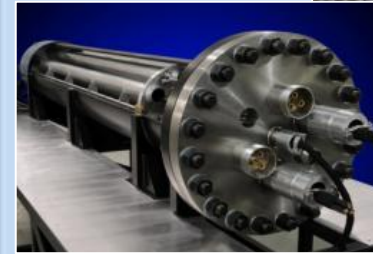
Space Systems and Commercial Space Imaging

- Multi-User System for Earth Sensing
- Mission Planning and Control Center Operations
- Payload/Cargo Integration
- Space Flight Hardware



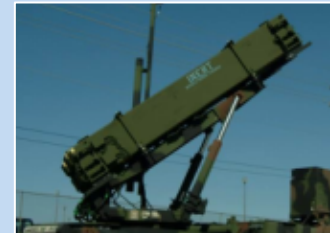
Energy & Environment

- Chemical Processing Equipment
- Electrical Penetration Assemblies
- Facilities M&O
- Radiological/Classified Laboratories



Marine & Aviation

- Naval Vessel Design and Manufacture
- LCS Gun Mount
- Army Missile Round Trainer
- Mine Seeking Hardware



MPA at Marshall Space Flight Center (MSFC)

- ▶ Scope: Provide Operations in support of the International Space Station (ISS) at MSFC in Huntsville, AL and Johnson Space Center (JSC) in Houston, TX.
- ▶ Includes mission preparation (plan), crew and flight controller training (train), and real-time (fly) requirements for spaceflight operations support and research utilization.



Mentor-Protege Agreement (MPA)

- ▶ Two Concurrent MPAs with HBCU/MSI Universities
 - ▶ Alabama State University (ASU)
 - ▶ University of Nevada, Las Vegas (UNLV)
- ◆ Period of Performances: August 2015 – July 2016
- ◆ Agreements: 100% engineering and technical based
- ◆ Focus: Exposing the University teams to the International Space Station (ISS) Operations on the MO&I contract and providing real life work experience for the students



Tips for Mentor-Protege Teaming

► Communication:

- ◆ Communicate, Communicate, Communicate – this really is the key to success

► Logistics

- ◆ Is geographical distance a challenge? Evaluate working remotely or establishing an alternative work schedule.
- ◆ Start the agreement at a time that works well with the school calendar for reporting requirements and participation
- ◆ Preselect students before agreement is in place



Tips for Mentor-Protege Teaming

■ Participation:

- ◆ Faculty and Staff involvement is necessary and critical to the success of the MPA
 - ◆ Lessons learned in corporate-academia partnership requiring flexibility, open communication and collaboration.
 - ◆ Host multiple brainstorming think tank sessions



UNLV Mentor-Protege Teaming

■ Successes

- ◆ Allowed UNLV to gain valuable past performance and opened opportunities for support on other NASA contracts
- ◆ Provided UNLV underlying knowledge to assist with writing proposals needed to sponsor experiments on board the International Space Station (ISS)
- ◆ UNLV team produced four multi-media products for the TBE Payload Developer (PD) training team and four additional courses to be used in training Ground Support Personnel (GSP)
- ◆ Based on outstanding level of support:
 - ◆ 1 student hired full time on MO&I contract
 - ◆ Subcontract provided directly to UNLV to continue the work
 - ◆ Identified additional doctorate student to assist with task order assignment on the MO&I contract
- ◆ Forming a new MPA at Jet Propulsion Laboratory (JPL)
- ◆ Contract in work with Lockheed Martin



ASU Mentor-Protege Teaming

■ Successes

- ◆ Total of six ASU students supporting Space Systems
- ◆ Produced five check on learning computer based training modules for ISS flight controllers.
- ◆ Two ASU students supported a task allowing them to gain an understanding of the Space Launch Systems (SLS) vehicle launch support requirements :
- ◆ First ASU student graduated and was hired to join TBE team
- ◆ Second student participating in the MO&I Flight Controller Certification program
- ◆ Subcontract provided directly to ASU to continue the work /
- ◆ Beginning discussions with ASU to engage in ISS R&D projects



Everywhereyoulook™



TELEDYNE
BROWN ENGINEERING
Everywhereyoulook™

www.tbe.com